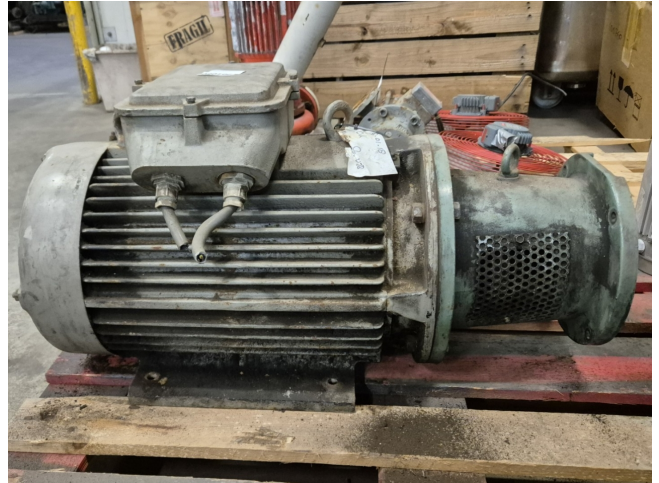


Rotor XKF180L04 808X

Specifications

| | |
|---------------|------------------------------------|
| Марка | Rotor |
| тип | XKF180L04 808X |
| kW | 22 |
| RPM | 1460 |
| Size & Weight | 850x360x480 mm (LxWxH) & 210 kg |
| 50 Hz / 60 Hz | 50 Hz |
| Stock | 1 |



Description

Used Rotor XKF180L04 808X

Used Rotor XKF180L04 808X electric motor with the following specifications:
50 Hz - 22 kW - 1460 RPM.

